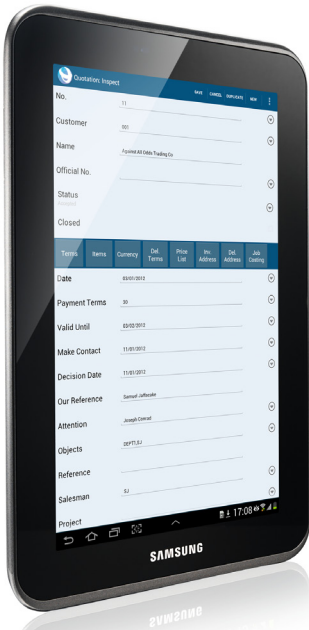


# Enterprise

Release Notes for  
Enterprise by HansaWorld v7.0

# Release Notes for Enterprise by HansaWorld v7.0

Enterprise by HansaWorld version 7.0 is released. Version 7.0 is the first version to support all the main tablet clients: iOS from Apple, Google Android, and Windows 8.



Quotation on Android

## ■ iOS Client

Enterprise by HansaWorld is the only mainstream ERP system that has created clients for tablets, rather than using browsers (which tend to be slow and provide a poor user experience) or building small role-based apps (which tend to be very short of functionality and do not offer either an integrated user experience or sufficient functionality to support Bring Your Own Device).

Version 6.4 of Enterprise introduced the full iOS client. Version 7.0 provides many improvements, including a cleaner interface, better support for landscape mode, and a significantly improved calendar.

The iOS version allows phone calls to be made from your phone, by clicking the phone icon on any Contact or Vendor-facing record. This opens a simplified Business Communicator window, from which calls can be placed. Both iPhone and iPad versions support the sending out of SMS messages from the simplified Business Communicator window.

Quotations, Sales Orders, Deliveries and Invoices on mobile devices have a new Operations menu function for Digital Signature. This opens a window allowing the customer to add their signature, which is then automatically stored on the paperclip of the relevant record.

Items support the taking of images on iOS. There is a camera icon at the upper right of the screen, which launches the camera app within iOS. Pictures taken here can then be "Used" on the Item, and will then display from the Image tile.

The touchscreen features of the Point of Sales and Restaurant modules have now been made available to iOS. This has entailed building a different interface from the desktop interface. iOS devices also support the iMag Pro Mobile Magstripe reader, for processing credit cards.

## ■ Google Android Client

Version 7.0 created the engine for Android client, and the interface. This has already been significantly improved in the development version, 7.1 - for those that are interested in the Android client, please contact your local HansaWorld office.

## ■ Windows 8 Metro Client for Tablets

The Windows 8 client has now been deployed for tablets. Much improved fast and fluid. Ready for touch screens with or without keyboard. Tested and runs well on microsoft surface.

## Operating system specific changes

### ■ Mac

It is possible to run 32-bit on 64-bit systems using the command `arch -64 ./Hansa-OSXSrv-R`.

### ■ Windows

There is a significant new interface for all Windows versions, drawing on elements from the Windows 8 client.

It is now possible to use Control-Shift-D to delete records when using Windows clients.

### ■ General

A new tile has been added to Contacts, Customer Categories, Items, and Item Groups, for BI. This shows a bar chart of sales over the last twelve months, in real time. Currently this feature is only available for Mac. Graphing has also been added to the Key Financial Ratios report, such that you can define Pie Charts based on rows of your configured report.

The Parameters.txt file contains many parameters. Some of these are often not required, and it is now possible to add a # character to "comment out" unneeded parameters.

### ■ General Ledger

For countries that use the Tax Templates feature, Enterprise now offers stronger options for reporting the Tax Codes used. A new setting, Tax Code from Tax Templates on Transaction rows allows the user to specify whether just the first tax code from a string on Tax Templates, or all Tax Codes, will get transferred from the subsystem record to the resulting General

Ledger Transaction row. The Tax Reports and Key Financial Ratio reports offer sufficient flexibility of reporting for any account/tax code combination.

Classifications have been added to the Accounts register, that operate in the same way as Classifications on records such as Contacts and Items. Accounts can be given Classifications which themselves belong to specific Classification Types. The system can be set up per user to allow the Paste Special for all matrix rows on records taking an Account to show a Classification-driven entry in the same style as the Item Classification entry - the user can drill down through multiple levels of Classification Types, each level displaying only those Accounts that are tagged with a Classification of the selected Classification Type.

The Chart of Accounts report has been extended to take advantage of these and other features. This is primarily used to create setup reports that show the Object Types that are required on any selected range of Accounts, and the available Object values for each Object Type.

Account Reconciliations have been improved with a number of features. There's a new setting (Reconciliation Settings) whereby you can specify whether a date and/or a reconciliation code is required when reconciling, and also a checkbox to ensure that unreconciled transactions are picked up from earlier periods even if you specify a period range in the Account Reconciliation. There is also a setting for Reconciliation Descriptions, so you can add comments to different codes used to mark transactions as Reconciled.

#### ■ Accounts Receivable

Invoices can include a Customs Number and Country of Origin, that is either manually entered or picked up from the Delivery register if a serial number is used.

Prepayments that are created from Receipts store the receipt date and prepayment number into a new field (Receipt Info), which is also available to Forms, for printing.

Even if the setting for showing unit price and sums on invoices is set to include tax, there are fields added to the Invoice form that allow the figures excluding tax to be printed.

The Receipt document includes an option for re-printing an Original version of an already printed document.

A new report has been added, Item Group Sales TAX, which sorts by Item Groups, and shows sales, TAXable sales, zero/exempt sales, TAX, Qty, Cost and Gross Profit % - this can be run for Invoices, POS Invoices or both.

The Accounts Receivable report has a new option to display the Official Serial Number alongside other invoice data. The Item Sales

Statistics support register now keeps data at the variety level, so the associated report can be by variety.

#### ■ Payables

A new maintenance routine has been added allowing the sending out of any selection of Periodic Vendor Statements via email.

#### ■ Purchase Orders

Discount Matrixes can now be applied to Vendors, with the result that they automatically flow through to Purchase Orders. Any percentages that apply to Items on the Purchase Orders matrix will be calculated automatically from the Discount Matrix setting.

The Returned Goods to Vendor register now supports a Language field, which works in the standard Enterprise manner - allowing the user to print different documents and text depending on which Language is selected, and to associate Languages automatically with specific vendors.

#### ■ Inventory

There's a new checkbox "Has Excise" on the Costs Tile of an Item - if left unchecked, the string "No Excise" will be printed on Invoice Documents.

Functionality has been added to allow additional inventory transactions for serialized items that have already been used in inventory. For example, serial numbers used on Invoices can now be used on Returned Goods records, Returned Goods to Vendors, Goods Receipts, or Inventory Depreciations. Note that, if a serial number is still registered in any Location, it cannot be received again to any Location.

The Freight Company setting has a Vendor field, which allows the Freight Company to be cross-referred to a Contact in the database.

Sources can be entered on matrix rows on Sales Orders, and then flow through onto Delivery records. These now support fields for Origin (with preset optional values) and Producer.

#### ■ Point of Sales

There is a new setting that governs how loyalty points are calculated when gift vouchers are redeemed. This setting is available both to POS Invoices and Accounts Receivable Invoices.

Various buttons have been added to both the POS and Accounts Receivable Touchscreen Invoice screen setups:

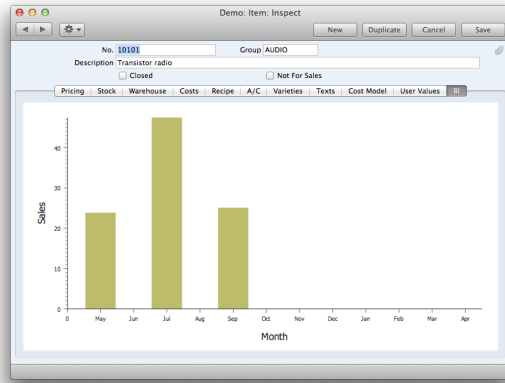
Add Header - allows a general comment to be added to the Invoice (which can be deleted with the Delete row button type) Return Reason - this is used in conjunction with a new setting that requires a reason code for any return. Reason



Signage



Connect all forms of communication



Graph of Sales by Item

codes can be stored, allowing selection from only the range of preset reason codes. Open Customer Record - opens the related Contact record, for example to allow editing of the address, phone number or email details

Change Address - allows editing of the Customer Address.

Change Date - opens and allows editing of the Invoice date. This should only be allowed in strictly controlled conditions.

If serial numbers are unique, then scanning them to an Invoice (POS or Accounts Receivable Touchscreen) will bring in their relevant Item details as well.

There is a new setting that requires a Return Customer to be specified on any Return, and which would block the completion of the return if only the default Cash customer was used.

A Cashier Statistics Report has been added, which breaks down by cashier (drawer) the sales by currency, split between cash and on account, and also showing the total number of invoices.

It's now possible for managers to assign themselves a password for giving discounts on POS Invoices - based on the Minimum Price List set up on that user's Person card.

The GP, POS Invoices Report can now be run by Drawer.

Additional options have been added to the Local Credit Card Terminals setting for printing and cutting the Receipt from the Terminal. A further setting has been added for tills receiving cash in more than one currency, to simplify the handling and reporting of cash.

## ■ KPIs

There is a new KPI added that shows the Accounts Receivable balance excluding any open invoices that themselves have the Disputed checkbox checked - SL Due without Disputed Invoices. Double-clicking on this KPI opens the Accounts Receivable report based on the selection criteria of checking the option Disputed: Exclude Disputed.

## ■ Contracts

Sales Tax using the multiple level calculations in the Tax Template feature are now available to the Contracts module.

## ■ Assets

Additional features and reporting have been added that allow different depreciation methods to be used on separate parts of the same, physically-unified, asset - for example a roof may be depreciated over 10 years on a building that is depreciated over 50 years. This is primarily achieved with a new concept of "sub-assets", whereby reporting can detail all the sub-assets linked to a specific asset.

Reports and maintenance routines now include the option to include amounts written off during a period.

## ■ Service Orders

The Serial Number History report launched from a Known Serial Number record now includes all Service Orders for that Serial Number.

It is now possible to create a Service Order directly from a Known Serial Number record, to speed up the workflow for service and repairs businesses.

The workflow for quoting the cost of the service and/or spare parts to a customer, before proceeding with the repair, is also significantly improved. There is a new Operations menu selection on the Service Order to create a Quotation. Quotations created in this way get up to four comment fields from the Service Order automatically filled in, which themselves are available for printing on Forms. Then there is another Operations menu selection on the Quotation to create a Work Sheet - this allows the



engineer to transfer all Items on the Quotation to a Worksheet, without any rekeying.

Tax Template functionality, for supporting multi-level tax calculations, are now available in Service Orders. An additional field has been added to the Local Machine setting in the User Settings module that allows a different Ship To Account Number to be defined per user/Location for Apple's GSX integration.

## ■ CRM

Activity Types can be set up to include Default Activity Text Codes, such that when used on an Activity, the Activity Type will bring with it any codes and associated text into the Activity matrix. For example, this might allow a service engineer to record parameters about the machines they are servicing on the same record as the time they are recording, and then print a certificate with all the details.

## ■ eMail

The feature to allow standard blocks of text to be defined for emails created from a variety of transaction types has been enhanced to include open invoice customer statements. So, for example, you can define reusable texts, with control over the Subject line, the text used at the start and at the end of the mail, and even vary this per Language. This setting also allows users to choose as a setting whether to put the record details, such as the Item code, description, quantity, unit price, discount and row sum, in the body of a mail or not.

There is also a new control, called Require Email Address on Mailbox, that prevents users with access to the internal mail system from sending external mails.

## ■ System

There's a new Setting in the System module, Opened Windows History, that lists all records you have opened during your current log on. You can drill from any of the records listed into the original record, to find a record you were working on previously.

The Delete Old Transactions maintenance routine in System now has the possibility to delete Inventory count records.

The Configuration Setting that governs which modules can be viewed now includes the Data Integrity module. The Single Function Users setting now includes an option for POS Touchscreen Invoices, to support the sale of POS Device CALs.

## ■ HAL

ParseTextField is a new HAL primitive with the effect of allowing customization to set up variables inside any text field, which would return data from within the database. For example, you can reference the recipient of Customer Letters, in such a way that a mailshot to a range of Customers would pick up the addressee's name, at the same time as their Accounts Receivable balance, your name and anything else relevant.

Features have been added so the Windows 8 interface can present various components as Tiles, rather than how they would be displayed using one of the other platforms. These can include:

- components of the Master Control Panel window
- registers
- anything attached to the Personal Desktop
- anything listed in the KPI section of the Master Control Panel.

A routine has been added to the Smart Apps Designer module whereby a programmer will automatically generate `datadef.hal`, window definition and document function files simply by copying in to the relevant screen a given window definition (from `WindowBegin` to `EndWindow`).



*The Calendar on iPad*

## ■ Modules

- Accounts Receivable
- Business Alerts
- Book
- Cash
- Checks
- Conferences
- Consolidation
- Contracts
- Course Booking
- Credit Management
- CRM
- Customs
- EDI
- Email
- Expenses
- Fax
- Fixed Assets
- General Ledger
- Group Calendar
- Hotel
- Human Resources Management
- Internal Inventory
- Inventory
- Jewelry
- Job Costing
- MRP
- Point of Sales
- POS Offline
- Pricing
- Production
- Payables
- Purchase Orders
- Quotations
- Rental
- Report Generator
- Resort
- Resource
- Planning
- Restaurant
- Sales Orders
- Service Orders
- Share Trading
- SmartView  
(Business Intelligence)
- Task Manager
- Telephone Log
- Timekeeper
- Warehouse Management
- Webshop and CMS

## ■ Technologies

- Business Communicator  
(Asterisk, Skype and TAPI)
- Limited Access
- Massive Cache
- Print Server
- Real Time Interfacing Toolkit
- Forms Designer
- HAL Customization language
- Relational Database
- Wide Area Networking

## ■ Company Profile

HansaWorld is the first major software house to provide a full suite of Enterprise Resource Planning, Financials and Customer Relationship Management as well as a wide selection of industry-specific solutions on tablets and smartphones. HansaWorld shows continued technological leadership in the international business software industry.

The group employs around 300 staff in a strong network of daughter companies and distribution partners covering over 100 countries on all continents, allowing HansaWorld to offer international implementations with a single point of contact across many countries. The solutions are available in more languages than anyone else, run on all major platforms and support mobility via laptops, the latest tablets and smartphones. More than 77,000 installations world-wide reinforce us as a global leader.

HansaWorld continuously invest in R&D to provide innovative and future proof solutions to help businesses run efficiently and smoothly, combining 25 years of experience with global knowledge and local representation.

## ■ Product Strategy

Enterprise's advanced and successful user interface was first developed for Apple Macintosh in 1988. In 1994, when the program was ported to Windows, it had already been proved by thousands of users. HansaWorld's experience with international sales and modern technology puts it in the perfect position to meet the challenges of the next decade.

HansaWorld provides a wide range of technologies for e-business including internal and external email, several webshop solutions and full clients for all major tablets support. In addition, HansaWorld can help to build a corporate portal. Enterprise is developed using C++ as its programming language, and proprietary technology for database design and for network communication. This allows HansaWorld to have the same products available for several different operating systems, each version optimized for maximum performance.

Currently Enterprise is available for Windows XP to Windows 8, Mac OS X, Linux and AIX, all browsers, all iOS devices (iPod Touch through to iPad), Windows CE devices up to Windows 8 tablets, and Google Android.

*Windows XP, Windows CE and Windows 8 are registered trademarks of Microsoft Corporation. Apple Macintosh, Mac OS and OS X, iOS, iPod Touch and iPad are registered trademarks of Apple Computer Inc. AIX is a registered trademark of IBM Corporation. Google Android is a registered trademark of Google Inc. Copyright HansaWorld Ltd.*