



HANSAWORLD
ENTERPRISE

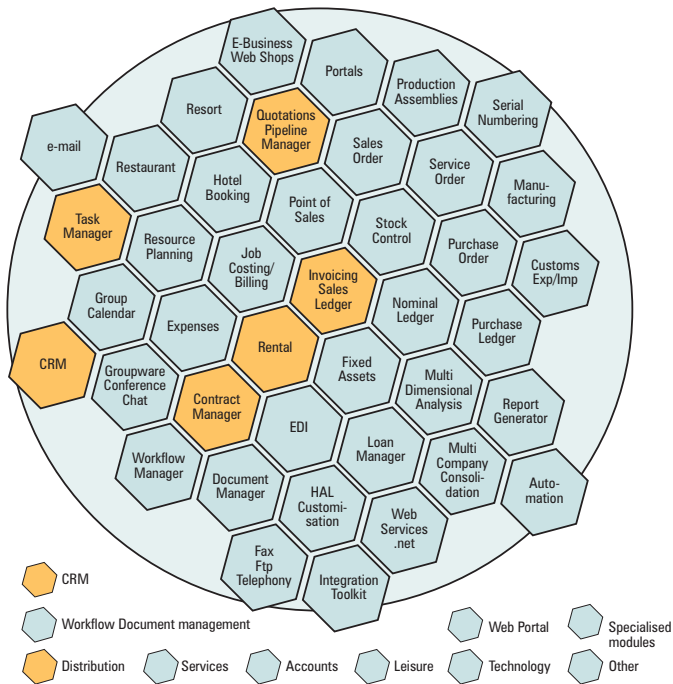
Repetitive Invoicing

Automate your invoicing processes and issue regular invoices over a range of dates.

Using the HansaWorld Contracts Module, set up regular periods to invoice your clients. Uses include fixed price support and maintenance agreements, memberships and other subscriptions, and some rental and agency arrangements.



www.hansaworld.com



Hansaworld Honeycomb – ERP, CRM, e-Business, Accounts – All in One Integrated Solution

Contracts

HansaWorld supports repetitive billing with the Contracts Module. For any arrangement where you wish to issue a number of invoices over a range of dates, you should set up a Contract. Typical uses include fixed price support and maintenance agreements, memberships and other subscriptions, and some rental and agency arrangements. Each Contract has a start date and an end date, and the date the contract was entered into. You also enter the number of invoices you wish to print at any time, and the length of each invoicing period. This can be any number of days or months.

Having set up the rules for repetition of invoices, you then set up the invoice itself. Tabs on the Contract screen are similar to the tabs for entering normal invoices to the Sales Ledger.

Example:

If you set the length of the invoicing period to 3 months, and the number of invoices to print at any one time to 3, you can produce 3 invoices for a quarter at one sitting, with invoice dates separated in monthly intervals. Other settings will allow you to produce one invoice in a quarter with three line items, one for each month, on it or one invoice per quarter with one line item for the quarter on it. Periods can be days if required.

Invoicing

HansaWorld supports detailed reporting on the value of invoices to be raised in a given period, selectable on various criteria including Contract type, Customer, and Contract number. You have the chance to check what will happen before running automated invoicing routines, so you can proactively correct any problems.

The batch routine for creating invoices runs in an identical way to the report, but instead of creating a report it creates the invoices themselves. The invoices are unposted, allowing checking and either batch or individual posting.

The invoice dates default to the current date, but can be overridden with automatic features. You can force the invoice date to be calculated from any number of days before or after the Contract date.

Deferred Income

Each Contract allows a different pattern to be created for releasing of deferred income. A single invoice for annual maintenance, for example, will usually be split equally over the twelve months. HansaWorld handles automatically the creation of the forward entries releasing income from deferred income, holding them as pending entries. At any time you can report on what has been posted to deferred income, and what remains to be released.

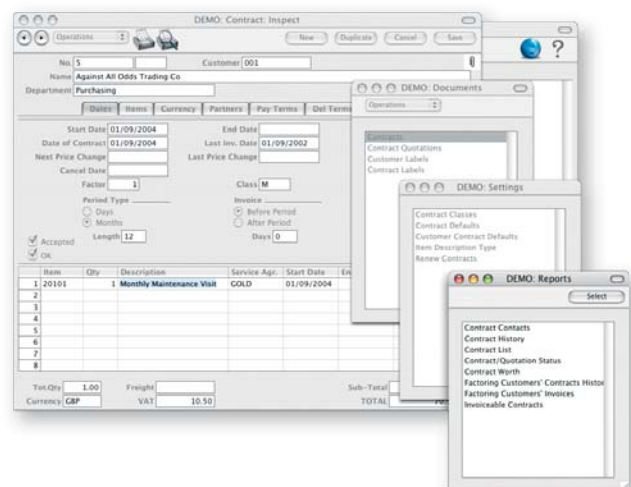
Integration with Customer Relationship Management

HansaWorld can be configured automatically to create an Activity in a To Do list for a given person or group of people. For example, this can be used to handle the date-based reminders to mail renewal letters or telephone customers to chase for subscriptions as a contract becomes due. Once in the system, as explained in more detail in HansaWorld and CRM, it is possible to automate the creation of further reminders at a preset periodicity, such as annually.

HansaWorld also has Service Agreements. Aside from reporting, this supports automated routines for scheduling visits from service engineers.

Quotes and Status

Quotations for contracts can be created within the Contracts Module and their status tracked to include issue, acceptance, credit checks, contracts issued and so on. Upon acceptance of a quotation, a contract can be created with a single command and without rekeying details. The status of the contact and the invoicing status of a customer with payment history are instantly viewable on screen.

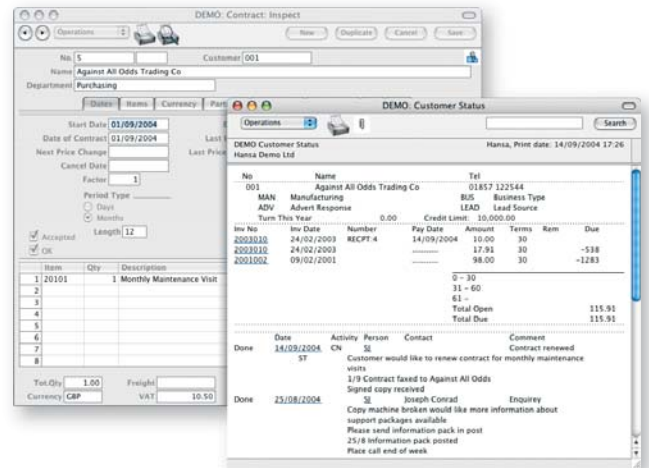


Updating Contracts

During the term of a contract, details of things in a contract may change in other parts of the system - customer details and terms, item descriptions, characteristics and costs and other relevant settings. A simple maintenance function - Update Contracts - will refresh contracts with these new details automatically without having to edit many existing contracts.

Circulation Contracts

For publishing-type contracts, a simple export of circulation details permits the printing of labels, letters etc for fulfilment purposes.



Repetitive Invoicing

All in one

With HansaWorld software, your front office and back office are totally integrated so that they function as a single, powerful tool for all employees. There are more than 45 fully featured modules covering the key business areas of most organisations, allowing you to concentrate your data in one database. Having a single datafile improves the consistency of your data, and lowers the total cost of ownership by reducing the cost of upgrading. Users can choose to run the HansaWorld client software on any Windows operating system, from 2000 to XP, Pocket PC, Mac OS X and even Linux GUI solutions. The HansaWorld server can be run on Windows XP and 2003, Mac OS X, Linux, Unix. The preferred hardware for servers is an IBM eServer (xSeries, pSeries, iSeries or zSeries) or xServe (or G4 in smaller installations).

With the HansaWorld Portal and e-business solutions, you can extend the community of users beyond your own employees, by giving customers, prospects and other partners carefully controlled access to data via a web browser.

Contact your partner

To learn more about HansaWorld ERP and CRM solutions contact your local HansaWorld office or distributor or a Certified HansaWorld Business Partner. HansaWorld offices and/or distributors are located throughout Europe, South America, South Africa and the Middle East. A list of HansaWorld offices and distributors can be found at the Country link on our website, www.hansaworld.com. Details about local Certified HansaWorld Business Partners can be found at the Countries link at www.hansaworld.com.

Company profile

HansaWorld is a major international software company specialising in business applications. The group has 130 employees in offices in Europe, South America and South Africa. Distributors are also found in Europe, South America and the Middle East.

HansaWorld's advanced and successful user interface was first developed for Apple Macintosh in 1988. In 1994, when the program was ported to Windows, it had already been proved by thousands of users. HansaWorld's experience with international sales and modern technology puts it in the perfect position to meet the challenges of the next decade.

HansaWorld provides a wide range of technologies for e-business including internal and external e-mail, several webshop solutions and PDA support. In addition, HansaWorld can help to build a corporate portal. HansaWorld is developed using C++ as its programming language, and proprietary technology for database design and for network communication.

This allows HansaWorld to have the same products available for several different operating systems, each version optimised for maximum performance. Currently HansaWorld is available for Windows 2000-XP, including Windows CE, Mac OS X and Unix, including Linux. HansaWorld is IBM eServer proven, running on xSeries, pSeries, iSeries and zSeries.

Windows 2000, Windows 2003, Windows CE, Windows XP are registered trademarks of Microsoft Corporation. Apple Macintosh and MAC OS are registered trademarks of Apple Computer Inc. xSeries, pSeries, iSeries and zSeries are registered trademarks of IBM Corporation.
Copyright HansaWorld Ltd.

Certified HansaWorld Business Partner



The Hub, Station Road
Henley-On-Thames RG9 1AY, United Kingdom
Tel: +44 (0)845 123 2732 Fax: +44 (0)845 123 2739
E-mail: uk@hansaworld.com
www.hansaworld.com