



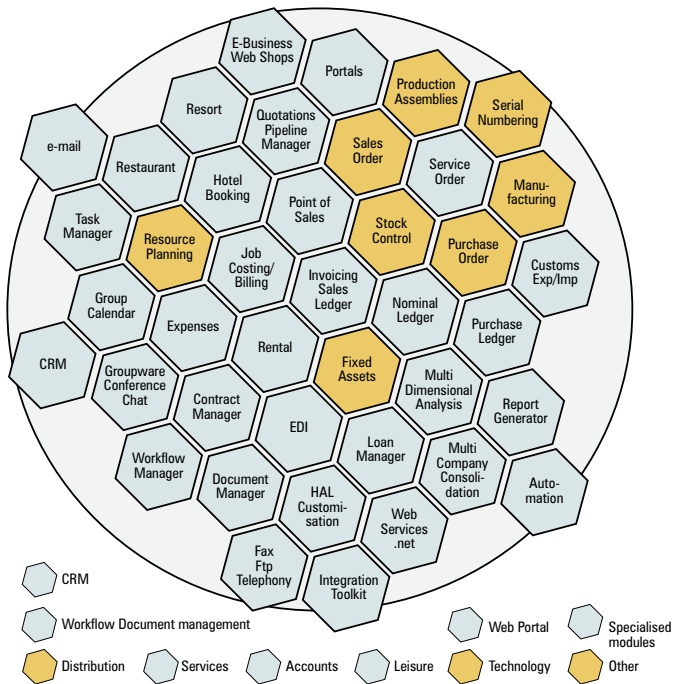
HANSAWORLD
ENTERPRISE

Manufacturing

*HansaWorld's integrated
Production module
provides you with the
tools to manage your
manufacturing processes
quickly and easily.*



www.hansaworld.com



Hansaworld Honeycomb – ERP, CRM, e-Business, Accounts – All in One Integrated Solution

Recipes

HansaWorld uses a concept called Recipes for assembly management, bill of materials and formulations. Recipes control:

- which raw materials or sub-assemblies will be used for finished goods or other sub-assemblies
- which costs will be used during the Production process for cost accounting
- how long the Production process is planned to take
- minimum and normal production quantities, also to assist in the planning process.

Standard labour can be included on Recipes.

Multi-level assembly reporting includes:

- listings of which raw materials are needed for each sub-assembly or finished item, and at which level
- listings of which raw materials and sub-assemblies are required for a specific finished item or sub-assembly
- which sub-assemblies or finished items use a specific raw material or sub-assembly
- costs associated with each sub-assembly or finished item
- how many of a specific sub-assembly or finished item can be produced.

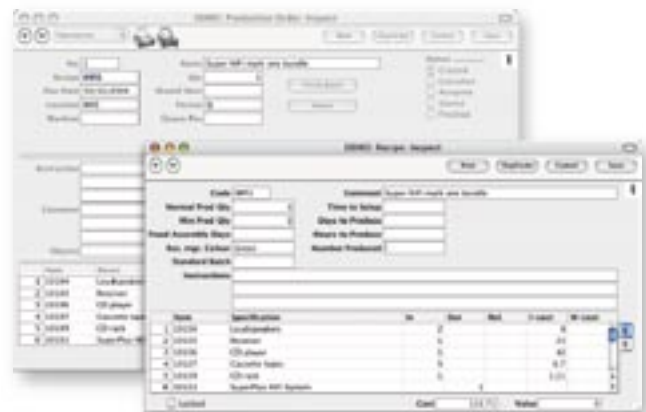
Machines, Machine Usage and Capacity Planning

Machines are set up in HansaWorld's Fixed Asset module. This controls not only the accounting for the machine, with different rates for automated depreciation calculations and for tax reporting, and a variety of pieces of relevant data about the machine, but also allows costs to be set for each hour the machine is running, and each hour the machine is idle.

To assist in the planning process, you can set which machines will support the production of each Recipe. If it is ever necessary to produce a sub-assembly or finished item on a machine other than the default, HansaWorld can be configured to use a different Recipe, thereby reflecting the different speeds or capacities of each machine.

The planning process is brought together by Production Orders. Any work that is to be scheduled needs to be entered as a Production Order. HansaWorld then automatically allocates Production Orders to default machines, and automatically assigns a place in the production queue. Both these allocations can be overridden manually. The schedule for machines can then be viewed from the graphical Resource Planner. Drill down from individual machines to specific Production Orders. Rearrange the schedule by drilling down and running a routine to reassign Queue Positions (you specify which Queue Position you want the current Production Order assigned to), or by drag and drop to another machine.

Production Orders also store both the total planned duration of the specific assembly, and the actual time taken - this latter time is automatically entered by HansaWorld when the Production Order is marked as Finished.



Production

The Production record in HansaWorld performs the changing of stock quantities (decrementing raw materials and incrementing assemblies or finished goods), and any associated accounting. Enter onto the Production how many of a particular Recipe you want to produce, and HansaWorld will split serial numbered items down to separate lines for each serial number. There is even a function for HansaWorld automatically to generate the serial numbers for each line.

HansaWorld handles wastage by allowing Productions to be discarded. The user is forced to enter a reason for the discard - from a selection of standard problems previously defined. The Inspector of each batch is also recorded.

Productions can be created automatically from Production Orders. This function is sensitive to batch sizes already predefined in the software, when items are batch tracked.

Assemblies and Finished Goods can even be "disassembled" - this creates a new Production with the reverse entries from the original Production.

For "specials", it is not mandatory to put a Recipe on a Production. Entries of raw materials (in) and assemblies/finished items (out) can be made directly to the Production, thereby reducing the duplication between the Recipe and the Production.

Standard reports include answers to such questions as:

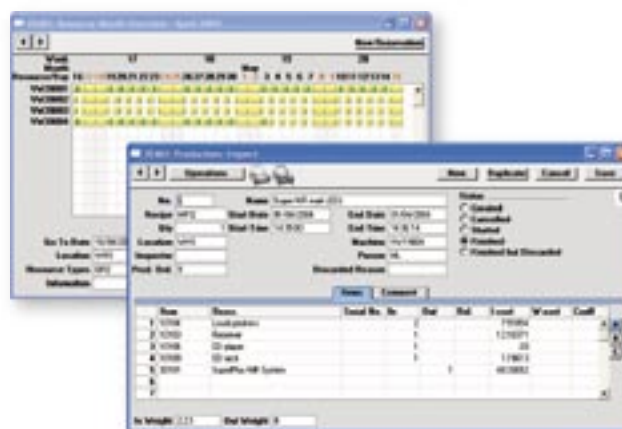
- Are there enough raw materials to make a range of Production?
- Which raw materials purchases must be made to support a range of Productions?

Just In Time Production

HansaWorld provides automated features for forward purchases of raw materials, and scheduling, all from Sales Orders. Lead times can be stored for each component item, with different lead times available for each supplier. Default suppliers for each item can also be set. Similarly the standard length of time to manufacture is stored on each Recipe, for use on Production Orders or Productions. There is a batch routine that brings this all together, by working back from the scheduled delivery date, and creating forward Production Orders (for example) to schedule the manufacture in time to deliver by the scheduled delivery date, and creating forward Purchase Orders in time to meet the scheduled Production Orders.

Materials Requirements Planning (MRP)

There are several reports and batch routines to assist in the materials purchasing process. See HansaWorld and Purchasing for further details.



Manufacturing

All in one

With HansaWorld software, your front office and back office are totally integrated so that they function as a single, powerful tool for all employees. There are more than 45 fully featured modules covering the key business areas of most organisations, allowing you to concentrate your data in one database. Having a single datafile improves the consistency of your data, and lowers the total cost of ownership by reducing the cost of upgrading. Users can choose to run the HansaWorld client software on any Windows operating system, from 2000 to XP, Pocket PC, Mac OS X and even Linux GUI solutions. The HansaWorld server can be run on Windows XP and 2003, Mac OS X, Linux, Unix and IBM OS/400. The preferred hardware for servers is an IBM eServer (xSeries, pSeries, iSeries or zSeries) or xServe (or G4 in smaller installations).

With the HansaWorld Portal and e-business solutions, you can extend the community of users beyond your own employees, by giving customers, prospects and other partners carefully controlled access to data via a web browser.

Contact your partner

To learn more about HansaWorld ERP and CRM solutions contact your local HansaWorld office or distributor or a Certified HansaWorld Business Partner. HansaWorld offices and/or distributors are located throughout Europe, South America, South Africa and the Middle East. A list of HansaWorld offices and distributors can be found at the Country link on our website, www.hansaworld.com. Details about local Certified HansaWorld Business Partners can be found at the Countries link at www.hansaworld.com.

Company profile

HansaWorld is a major international software company specialising in business applications. The group has 130 employees in offices in Europe, South America and South Africa. Distributors are also found in Europe, South America and the Middle East.

HansaWorld's advanced and successful user interface was first developed for Apple Macintosh in 1988. In 1994, when the program was ported to Windows, it had already been proved by thousands of users. HansaWorld's experience with international sales and modern technology puts it in the perfect position to meet the challenges of the next decade.

HansaWorld provides a wide range of technologies for e-business including internal and external e-mail, several webshop solutions and PDA support. In addition, HansaWorld can help to build a corporate portal. HansaWorld is developed using C++ as its programming language, and proprietary technology for database design and for network communication.

This allows HansaWorld to have the same products available for several different operating systems, each version optimised for maximum performance. Currently HansaWorld is available for Windows 2000-XP, including Windows CE, Mac OS X and Unix, including Linux and OS/400. HansaWorld is IBM eServer proven, running on xSeries, pSeries, iSeries and zSeries.

Windows 2000, Windows 2003, Windows CE, Windows XP are registered trademarks of Microsoft Corporation. Apple Macintosh and MAC OS are registered trademarks of Apple Computer Inc. xSeries, pSeries, iSeries and zSeries are registered trademarks of IBM Corporation.
Copyright HansaWorld Ltd.

Certified HansaWorld Business Partner



Matrix Studios, 91 Peterborough Road
Parsons Green, Fulham, London SW6 3BU
Tel: +44 (0)845 123 2732 Fax: +44 (0)845 123 2739
E-mail: uk@hansaworld.com
www.hansaworld.com